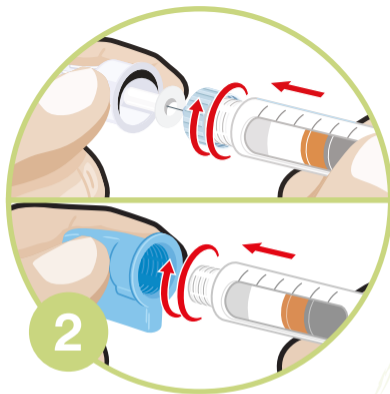


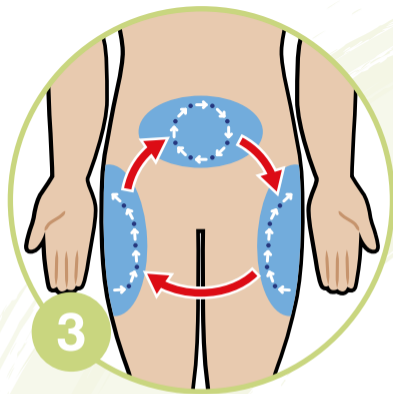
Good Injection Guide



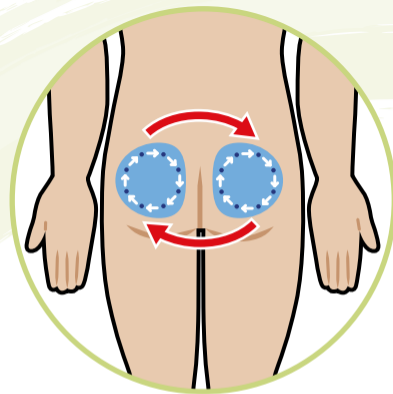
First wash your hands with soap and water.



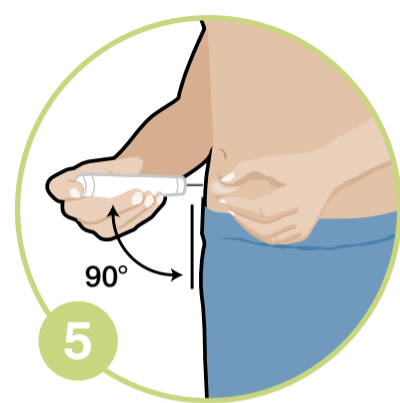
Attach a new needle onto the pen, then remove the shields.



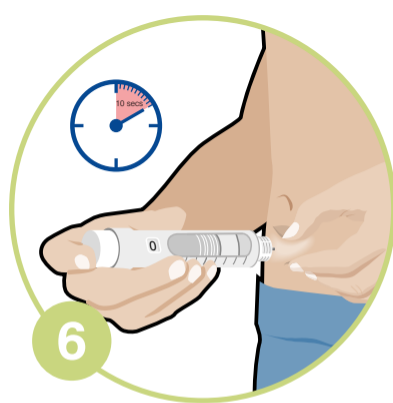
Make sure you rotate between injection sites for every new injection.



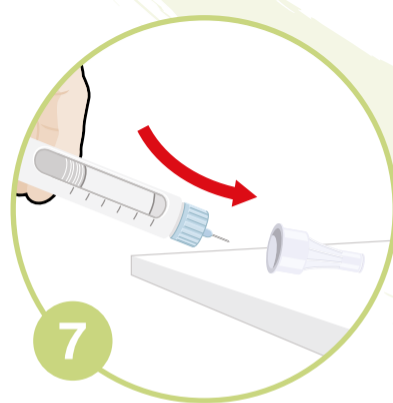
Prime your pen as recommended and dial the required dose.



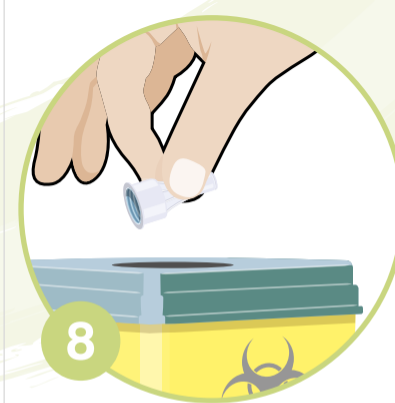
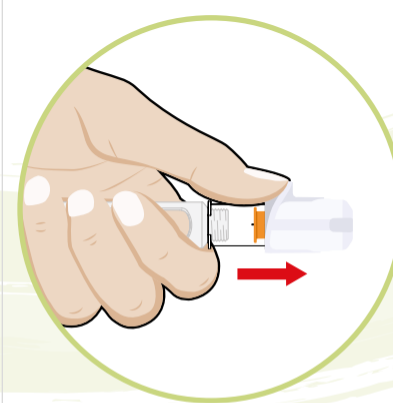
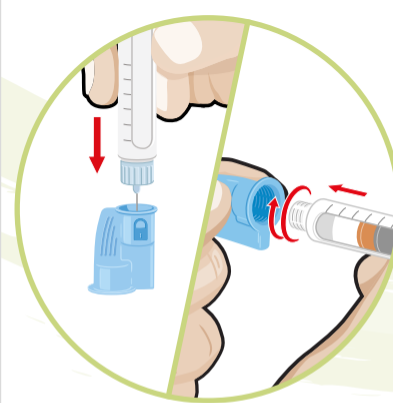
If recommended, pinch/fold your skin and insert the needle at a 90° angle.



Inject as recommended by your healthcare professional. Wait 10 seconds before removing needle from the skin.



To remove the needle, carefully replace the outer cap. Use either a scoop technique or push it into the removal system until it clicks using one or two handed techniques. If you are using a safety pen needle, push the safety guard away from you until it clicks.



Dispose of the needle in a suitable sharps container.

GIG-12PP-LT/MCC/0520/06