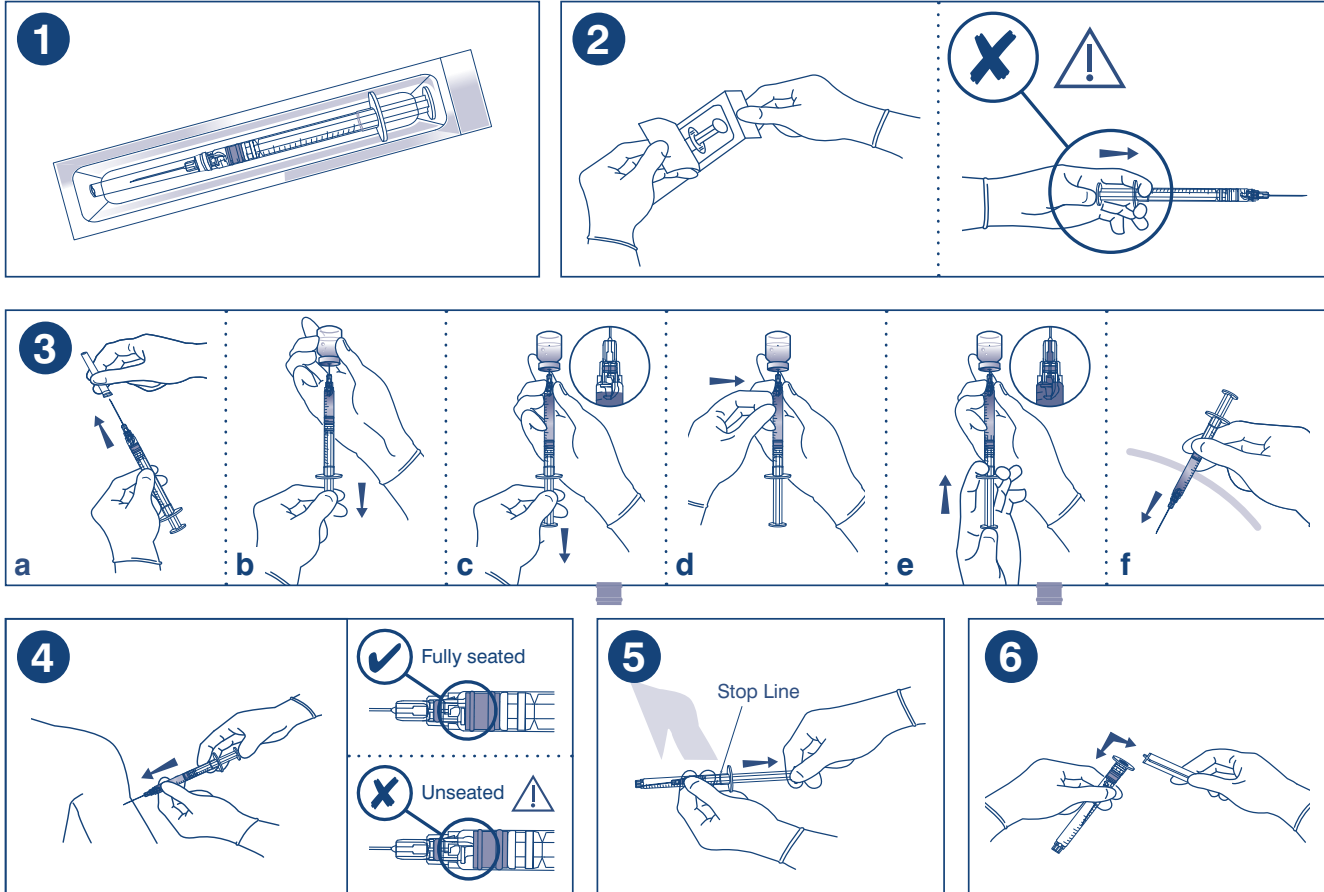


Unifine[®] Syringes

Retractable Safety Syringe and Needle



INSTRUCTIONS FOR USE

1. **INSPECT INTEGRITY** of the package. If the seal is broken or pouch is damaged discard the entire package.
2. Peel open the pouch and remove the syringe.
 ⚠ **CAUTION! DO NOT PUSH** the plunger before drawing up the medication to prevent premature activation of the safety feature.
3. Draw up medication and perform injection according to recommended clinical practice.
 - a. Remove the needle guard;
 - b. Hold the needle upward, invert the vial bottle and insert the needle into the bottle. Pull back the plunger slowly to withdraw the liquid medicine from the bottle. Withdraw the medicine into the syringe, just beyond the required volume (approximately 0.05ml);

Note: air bubbles should be removed before removing the needle from the vial to minimise vaccine wastage.

 - c. After the medicine is withdrawn, with the needle still inserted in the vial, hold the syringe with the needle upward (to allow the surface of the liquid to be parallel with the scale line of the syringe) and gently draw back the syringe a little to create an air pocket;
 - d. Keeping the syringe vertical (needle upwards), tap the outer wall of the syringe with your index finger, allowing any bubbles to float up;
 - e. Gently push the plunger upward with the thumb to expel any air at the top of the syringe and until the volume of medicine to be administered is correct. Visually check to ensure that no air is left at the top of the syringe;
 - f. Inject.

4. **PUSH** the plunger until it is **FULLY SEATED** (the rubber stopper is up against the end of the syringe) to activate the safety feature. This will involve pushing the plunger beyond the first position it naturally stops in until you feel a 'click' sensation.
 ⚠ **CAUTION!** There should be **NO SPACE** between the needle base and the plunger when the safety feature has been **CORRECTLY** activated. If you do not push the plunger fully to the end, there is a risk that not all the medicine will be delivered into the patient.
5. **REMOVE** the needle from the patient after completing the injection. Then, **HOLD** the barrel firmly and **GENTLY** pull back the plunger until an obvious stop is felt.
 ⚠ **CAUTION!** Point the needle **AWAY** from the patient and other staff members when retracting the plunger.
DO NOT PULL the plunger beyond the **STOP LINE** and expose unprotected needle.
6. **SNAP OFF** the plunger and **DISCARD** both parts in an approved sharps container as per your facility's policy.

Note:

- A. Do not tilt the needle during discharge.
- B. Syringe has been calibrated. Built-in safety feature does not affect syringe calibration.

⚠ **CAUTION!** In accordance with the OSHA Standard on Blood Borne Pathogens, always use appropriate personal protective equipment when performing injections.