

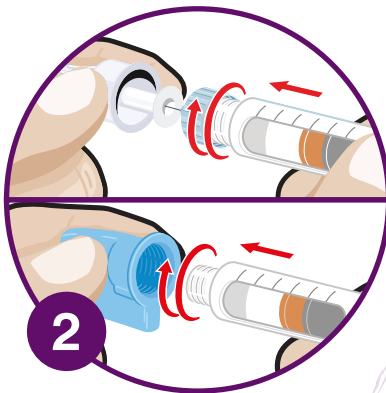
Good Injection Guide

1



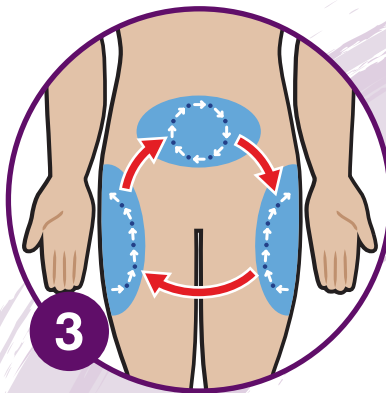
First wash your hands with soap and water.

2



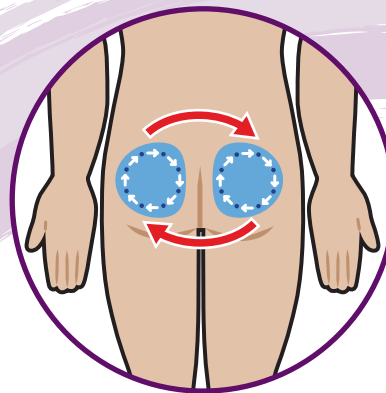
Attach a new needle onto the pen, then remove the shields.

3

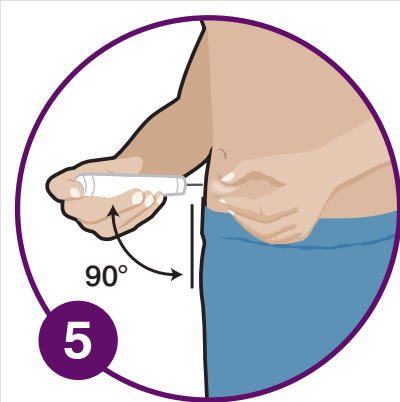


Make sure you rotate between injection sites for every new injection.

4

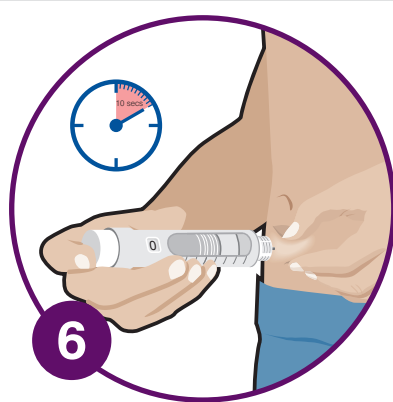


Prime your pen as recommended and dial the required dose.



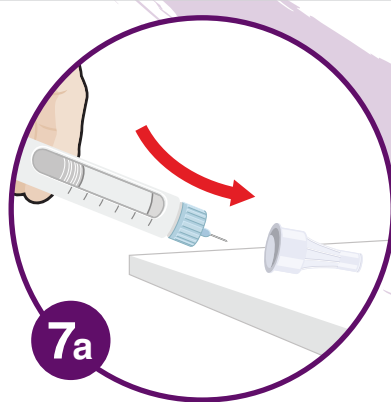
5

If recommended, pinch/fold your skin and insert the needle at a 90° angle.



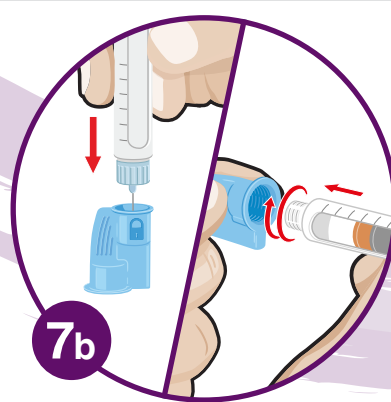
6

Inject as recommended by your healthcare professional. Wait 10 seconds before removing needle from the skin.

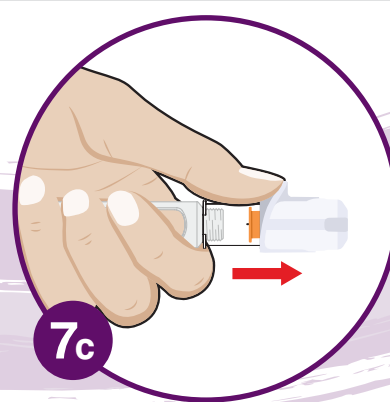


7a

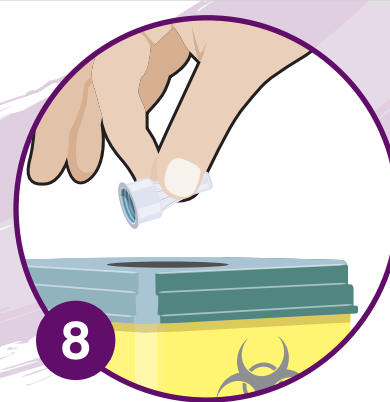
To remove the standard needle (7a), carefully replace the outer cap. Use either a scoop technique or push it into the removal system (7b) until it clicks using one or two handed techniques. If you are using a safety pen needle (7c), push the white safety guard away from you until it clicks and covers the needle.



7b



7c



8

Dispose of the needle in a suitable sharps container.

GIG-12PP-LT/MCC/0622/01