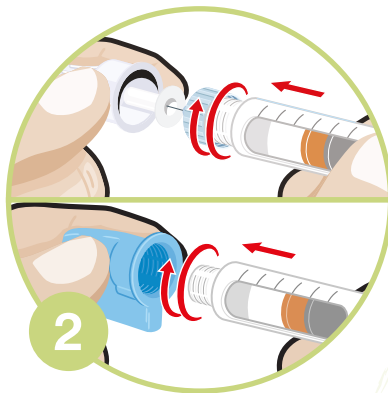


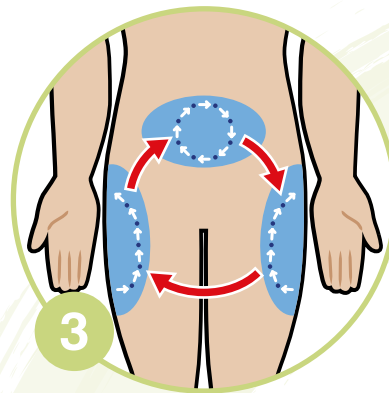
# Good Injection Guide



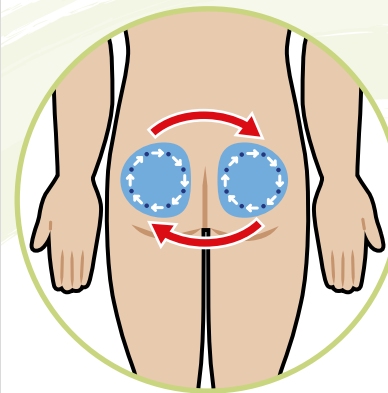
First wash your hands with soap and water.



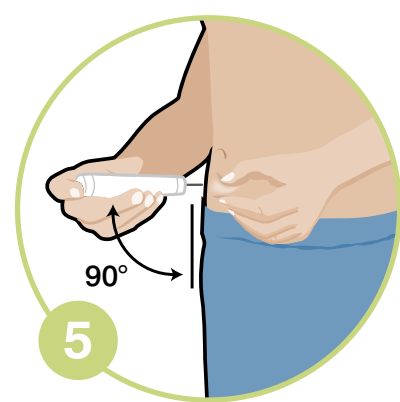
Attach a new needle onto the pen, then remove the shields.



Make sure you rotate between injection sites for every new injection.

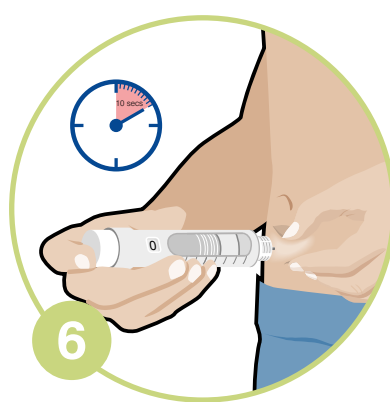


Prime your pen as recommended and dial the required dose.



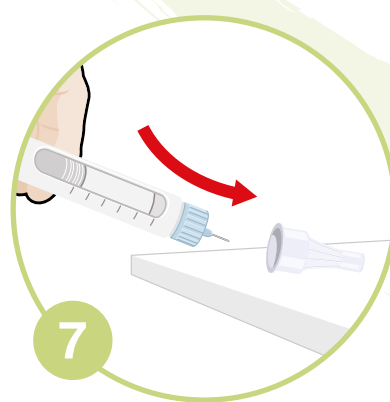
5

If recommended, pinch/fold your skin and insert the needle at a 90° angle.



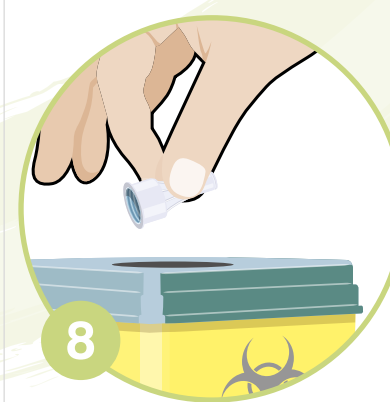
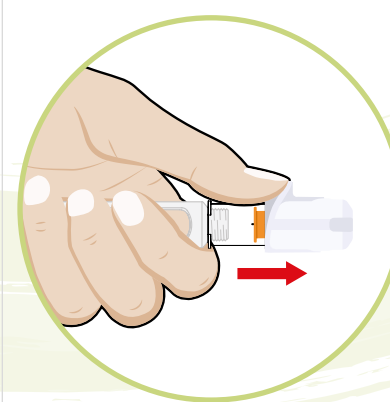
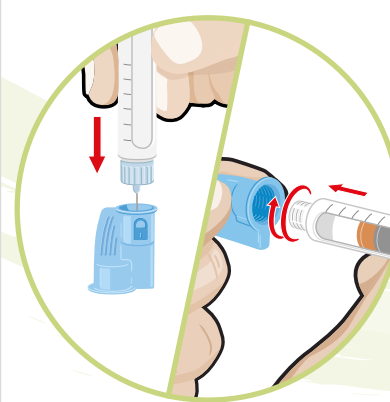
6

Inject as recommended by your healthcare professional. Wait 10 seconds before removing needle from the skin.



7

To remove the needle, carefully replace the outer cap. Use either a scoop technique or push it into the removal system until it clicks using one or two handed techniques. If you are using a safety pen needle, push the safety guard away from you until it clicks.



8

Dispose of the needle in a suitable sharps container.

GIG-12PP-LT/MCC/0520/06