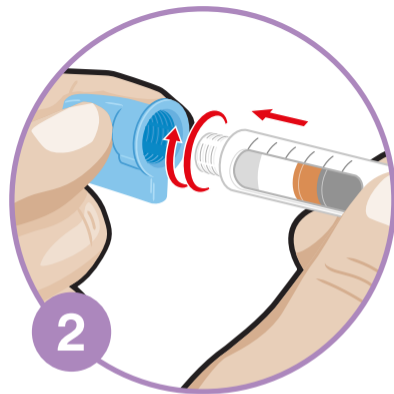


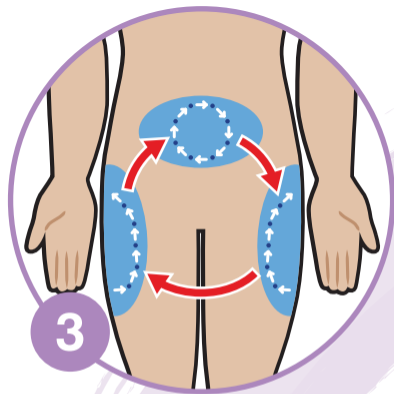
Good Injection Guide



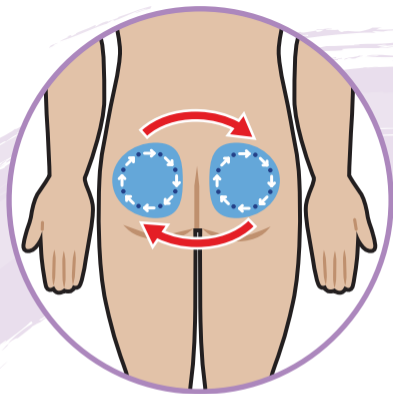
First wash your hands with soap and water.

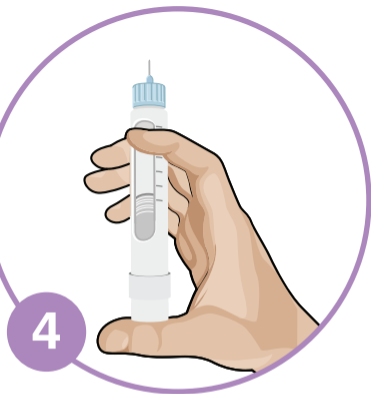


Remove seal and push the new needle straight onto the pen. Screw tight.

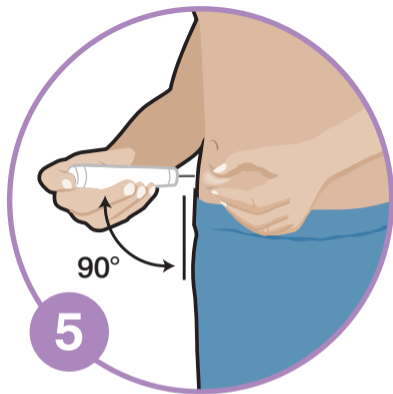


Make sure you rotate between injection sites.

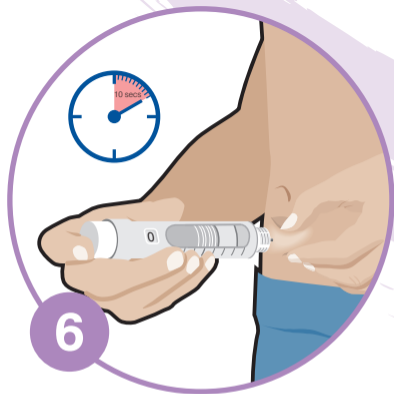




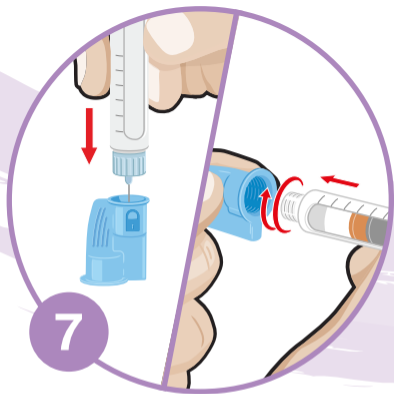
Prime your pen as recommended and dial the required dose.



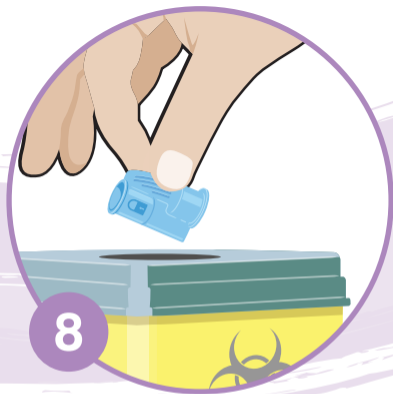
If recommended, pinch/fold your skin and insert the needle at a 90° angle.



Push the button down completely. Keep the button pressed down, count slowly to 10 before removing.



Remove the needle and place it in the removal system until it clicks using one or two handed techniques.



Dispose of the needle in a suitable sharps container.

UPP-GIG-10PP-LT/MCC/0817/04